



ME303AF MIG/MAG FUME EXTRACTION TORCH 300 Amp.



These torches are characterized by the following features:

- Direct extraction at the arc to protect the respiratory system
- Simple extraction control directly on the swivel of the welding torch
- Optimal torch cooling - high durability
- Easy installation to existing MIG/MAG workplaces
- Time-saving torch change by the Euro Central Adapter System
- Euro Central Adapter System or French-pin

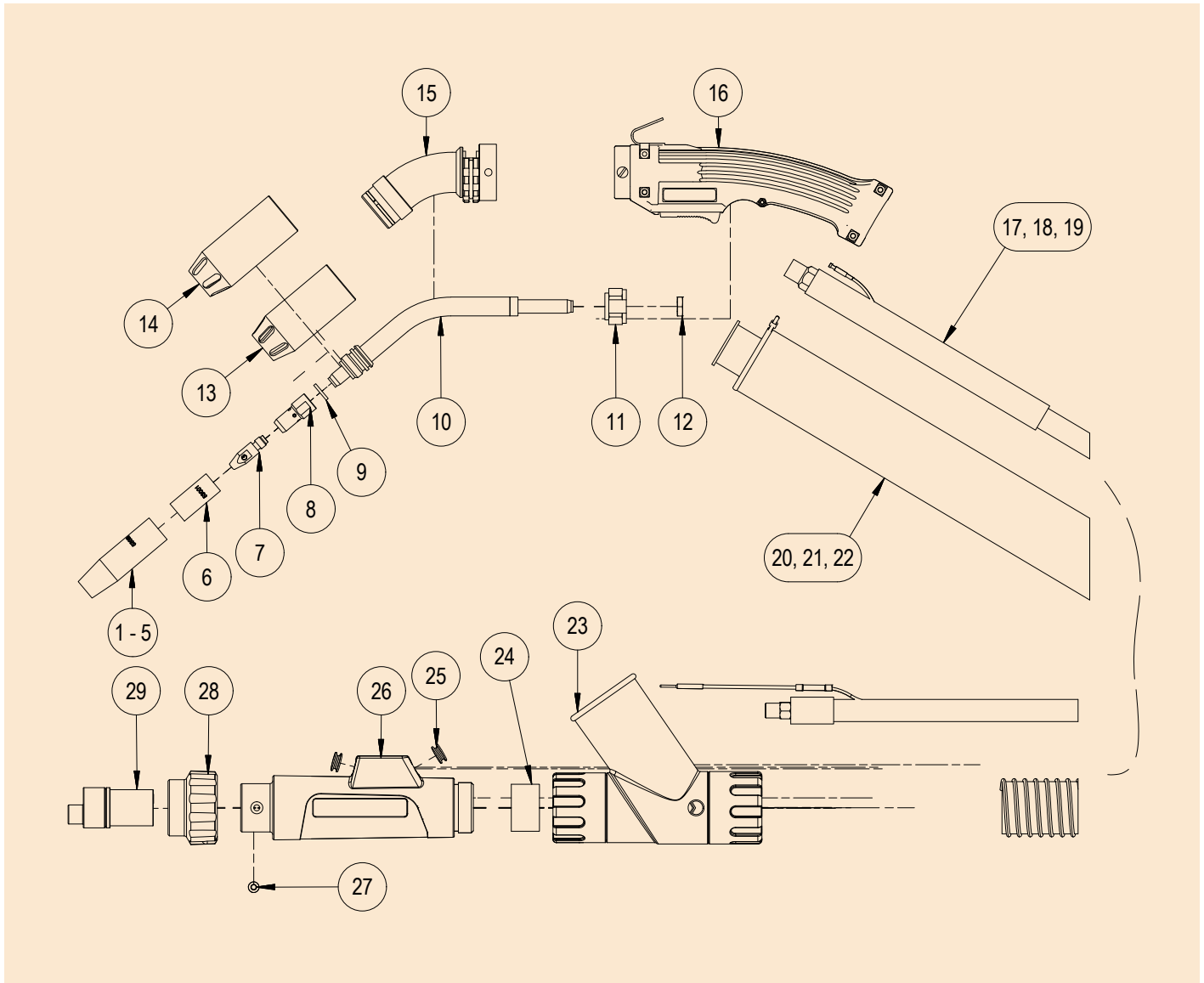
Model	ME303AF
Maximum current CO ₂	300 A
Duty Cycle CO ₂	60%
Maximum current Argon M.G.*	200 A
Duty Cycle Argon	60%
Extraction Rate	ca. 80 m ³ /h
Wire Ø	0.8 - 1.2 mm

*mixed gas

Type	Item no. - 3.0m	Item no. - 4.0m	Item no. - 5.0m
ME303AF French Pin	58580	58581	58582

Different lengths available upon request

Replacement Parts:



Pos.	Item no.	Description	pcs.	Pos.	Item no.	Description	pcs.
1	53015	Nozzle spray H.D.	1	16	120041	Handle fume extraction	1
2	53005	Nozzle dip long conical	1	17	120042	Hose package complete ME300AF 3.0m	1
3	53001	Nozzle dip short conical	1	18	120043	Hose package complete ME300AF 4.0m	1
4	57911	Nozzle spray H.D. short	1	19	120045	Hose package complete ME300AF 5.0m	1
5	53008	Nozzle parallel	1	20	119756	Fume extraction hose without regulation 3.0m	1
6	57002	Spatter protection Ø16.7x14.5 L: 35	1	21	119770	Fume extraction hose without regulation 4.0m	1
7	57838	Contact tip M8, copsil for alu wire 1.0-1.2, round	1	22	119730	Fume extraction hose without regulation 5.0m	1
8	52021	Gas diffuser M8 ME300A-ME350A	1	23	119685	Fume extraction adapter	1
9	57104	Protection ring	1	24	76050	Rubber Seal	1
10	117305	Swan Neck ME303AF	1	25	57098	Rubber grommet 1900	1
11	117562	Swan Neck Holder ME202	1	26	57125	Central adapter housing 1900 complete	1
12	117561	Nut Lock M10 x 1 hose cable	1	27	57172	Pan-head screw with slot M4 x 9	1
13	119349	Neck Extraction Tube complete	1	28	76062	Adapter nut complete	1
14	120039	Extraction nozzle ME303AF/WF L: 76.5	1	29	76050	2-Pin Central Adapter M11 x 1 complete	1
15	120040	Extraction nozzle ME303AF/WF L: 82	1				

Gas Diffuser		53008 M8	
Liners Hard Wire		57151: 3.0m, black for steel wire 0.6-0.8 57153: 4.0m, black for steel wire 0.6-0.8 56410: 5.0m, black for steel wire 0.6-0.8 57191: 3.0m, blue for steel wire 0.8-1.2 57193: 4.0m, blue for steel wire 0.8-1.2 57205: 5.0m, blue for steel wire 0.8-1.2	57275: 3.0m grey for steel wire 1.2-1.4 57277: 4.0m grey for steel wire 1.2-1.4 57279: 5.0m grey for steel wire 1.2-1.4
Liners Soft Wire		57155: 3.0m, black for alu wire 0.8-1.0 57157: 4.0m, black for alu wire 0.8-1.0 57393: 5.0m, black for alu wire 0.8-1.0	57200: 3.0m, blue for alu wire 1.0-1.2 57202: 4.0m, blue for alu wire 1.0-1.2 57204: 5.0m, blue for alu wire 1.0-1.2
Contact Tips		Contact Tip M8 hexagonal (pure copper) MOQ = 10 pcs.	Contact Tip M8 round, copsil (copper-silver) MOQ = 10 pcs.
		57800: M8, 0.8, hexagonal	57835: M8, copsil (CuCrZr) 0.8, round
		57802: M8, for alu wire 0.8-1.0, hexagonal	57837: M8, copsil for alu wire 0.8-1.0, round
		57803: M8, for alu wire 1.0-1.2, hexagonal	57838: M8, copsil for alu wire 1.0-1.2, round

	Pos.	Item no.	Description
	1	53009	Nozzle spray HD
	2	53004	Nozzle dip, long conical
	5	53005	Nozzle parallel
	14	117562	Extraction nozzle ME303AF/WF L: 76.5
	15	117561	Extraction nozzle ME303AF/WF L: 82

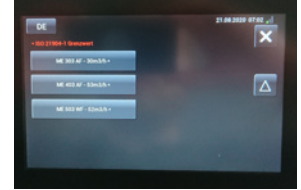
Mechafin recommends:



Kemper MiniFil



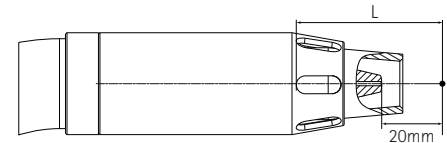
Kemper VacuFil



Extraction data Mechafin extraction torches:

The specifications of the INRS in France and the ISO standard 21 904 prescribe for extraction torches with a max. welding current of more than 200A a required detection speed of at least 0.35 m/s at the point of origin of the welding fumes (20 mm in front of the nozzle). ME303AF achieve this speed at:

ME303AF L= 45mm $Q_{1min} = 34 \text{ m}^3/\text{h}$ at the extraction nozzle
 Near the connecting piece a negative pressure of approx. 4,600 Pa.
 and a detection speed of 45 m³/h must be applied

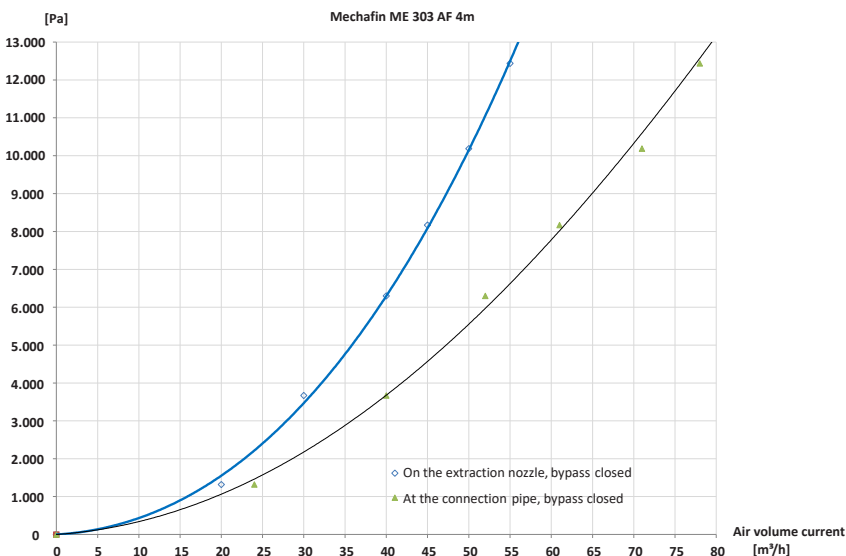


If the use of a different nozzle results in a different dimension „L“, the required extraction rates must be adjusted accordingly.

The minimum volume flow at the extraction nozzle is calculated from the dimension „L“ (in m) as follows: $Q_1 = v * 3.600 * 4 * \pi * L^2$

Pressure loss

Negative pressure at the connection pipe



Mechafin AG
 Chrummacherstr. 3 | CH-8954 Geroldswil | Switzerland
 Telephone +41 44 749 30 60 | Facsimile +41 44 749 30 70
 Mail info@mechafin.ch | Web www.mechafin.com

Mechafin Ltd
 Leigh Street | High Wycombe | Buckinghamshire | HP11 2QU UK
 Telephone +44 1494 441 110 | Facsimile +44 1494 473 049
 Mail enquiries@mechafin.co.uk | Web www.mechafin.com

All descriptions included in this catalogue are correct at the time of printing and may be subject to change and alternation from time to time. The contents used in this catalogue are property of Mechafin AG. This means, they are protected copyrights and/or trademarks or otherwise protected by ownership law.