

# Feed Roll 40mm 0.6+0.8 for steel wire

Suitable for series: ME2000-40, ME2500-40, ME2600-40

Item number:	140101
Product weight (kg):	0.09 kg
Packing unit:	1

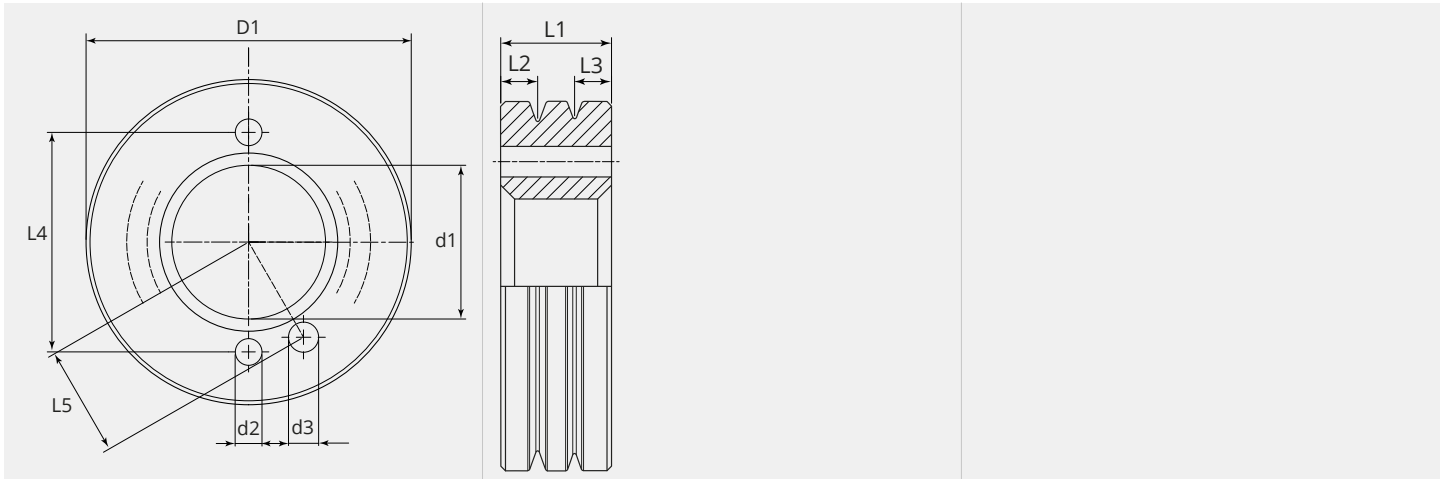


## PRODUCT DESCRIPTION

Suitable for series: ME2000-40, ME2500-40, ME2600-40

## TECHNICAL CHARACTERISTICS

Wire (mm):	0.6 + 0.8
Welding wire:	Steel
Groove shape:	V
Characteristics of the groove:	flat
Type of setting:	standard
Material:	Hardened steel
Surface:	Black-finish
Arrangement Rolls:	Bottom

**DIMENSIONAL DRAWING**

**DIMENSIONAL DRAWING**

<b>L1 (mm):</b>	12.00
<b>L2 (mm):</b>	4.00
<b>L3 (mm):</b>	4.00
<b>L4 (mm):</b>	27.00
<b>L5 (mm):</b>	13.50
<b>D1 (Ø):</b>	40
<b>d1 (Ø):</b>	18.90
<b>d2 (Ø):</b>	3.30
<b>d3 (Ø):</b>	3.70

From 300 pieces we produce your personal feed roll with logo. On request feed rolls are also available in stainless steel.