

# Intermediate Guide with synthetic insert for 0.5 - 1.6mm Wire

Applies for series: ME1800

Item number:	119625
Packing unit:	1



## PRODUCT DESCRIPTION

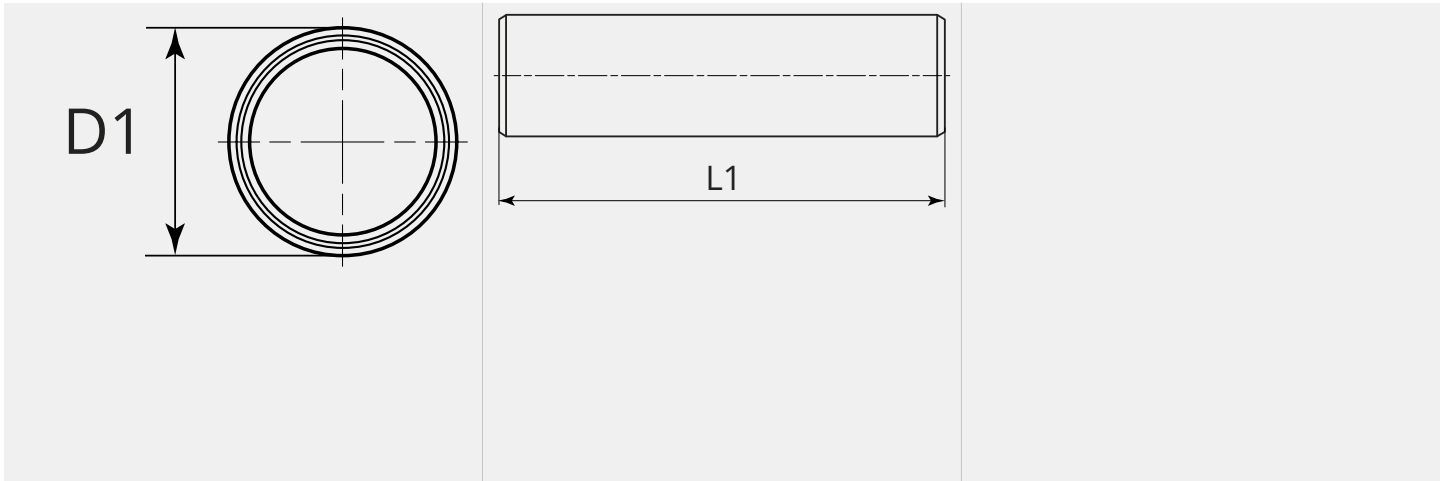
Applies for series: ME1800

## TECHNICAL CHARACTERISTICS

Wire (mm):	0.5 - 1.6
Welding wire:	Aluminium
Material:	Steel / plastic
Surface:	Zinc plated
Suitable:	ME1800



DIMENSIONAL DRAWING



DIMENSIONAL DRAWING

L1 (mm):	48.0
D1 (Ø):	4.9