

Intermediate Guide for 1.6 - 3.0mm Wire

Applies for series: ME1800

Item number:	119614
Product weight (kg):	0.0036 kg
Packing unit:	1



PRODUCT DESCRIPTION

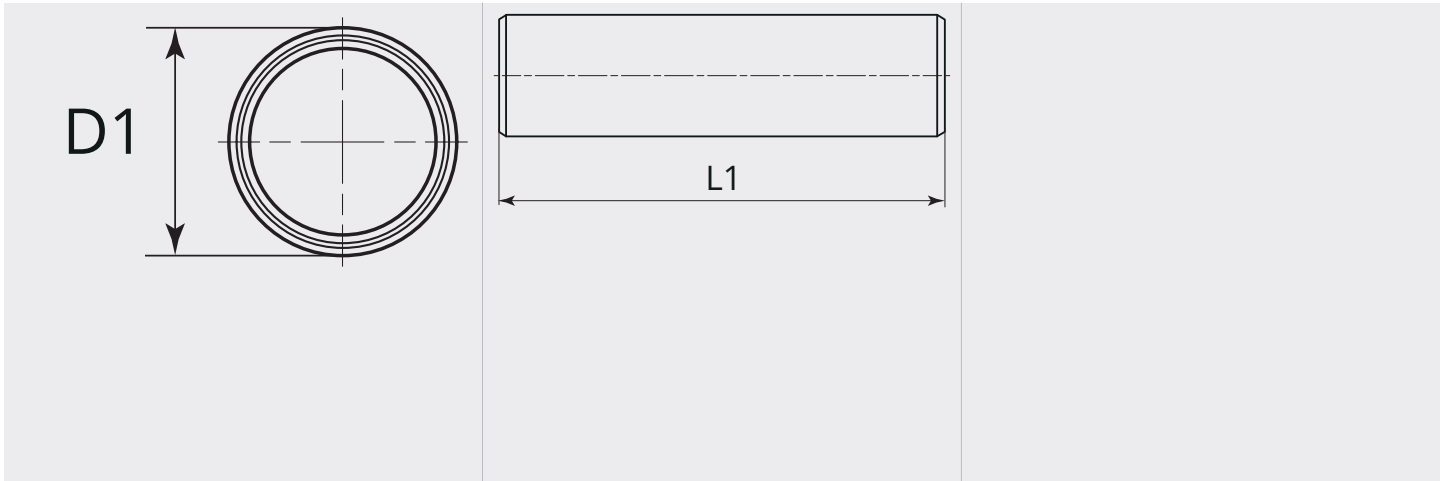
Applies for series: ME1800

TECHNICAL CHARACTERISTICS

Wire (mm):	1.6 - 3.0
Welding wire:	Steel / cored wire
Material:	Steel
Surface:	Zinc plated
Suitable:	ME1800



DIMENSIONAL DRAWING



DIMENSIONAL DRAWING

L1 (mm):	48.0
D1 (Ø):	4.9