

Inlet guide tube ID1.2x100

For welding wire 0.5 - 0.8mm

Item number: 119556

Product weight (kg): 0.013 kg



PRODUCT DESCRIPTION

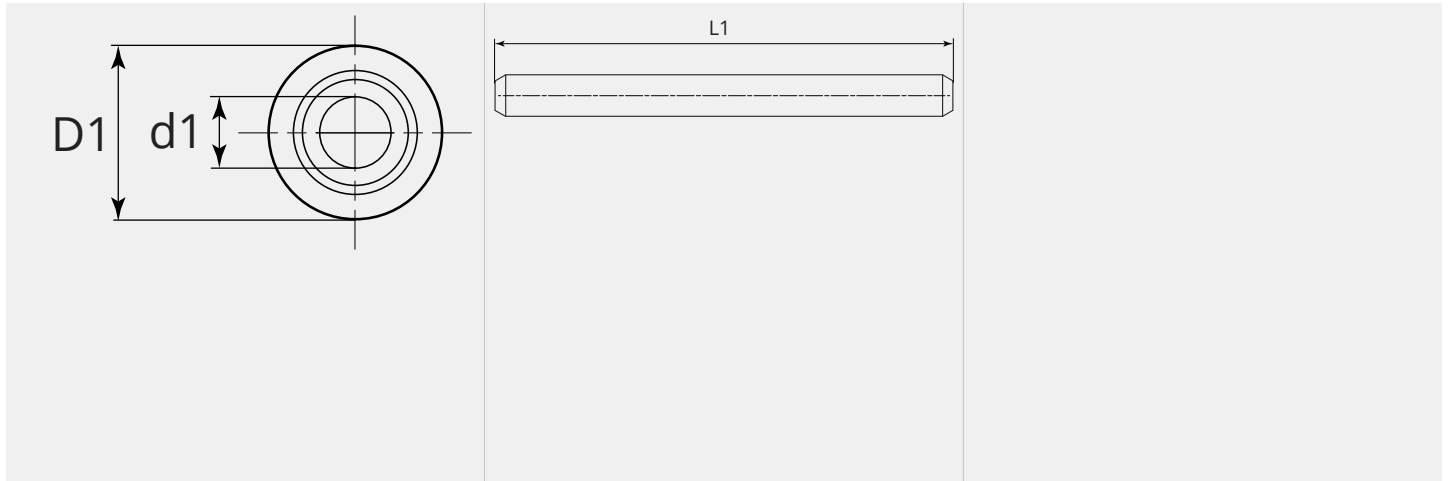
For welding wire 0.5 - 0.8mm

TECHNICAL CHARACTERISTICS

Wire (mm):	0.5 - 0.8
Welding wire:	Steel / cored wire
Material:	Steel
Surface:	Zinc plated
Length (mm):	100



DIMENSIONAL DRAWING



DIMENSIONAL DRAWING

D1 (Ø):	4.9
L1 (mm):	100.0