

Intermediate Guide steel for 0.5 - 1.6mm Wire

Applies for series: ME1800

Item number:	119472
Product weight (kg):	0.006 kg
Packing unit:	1

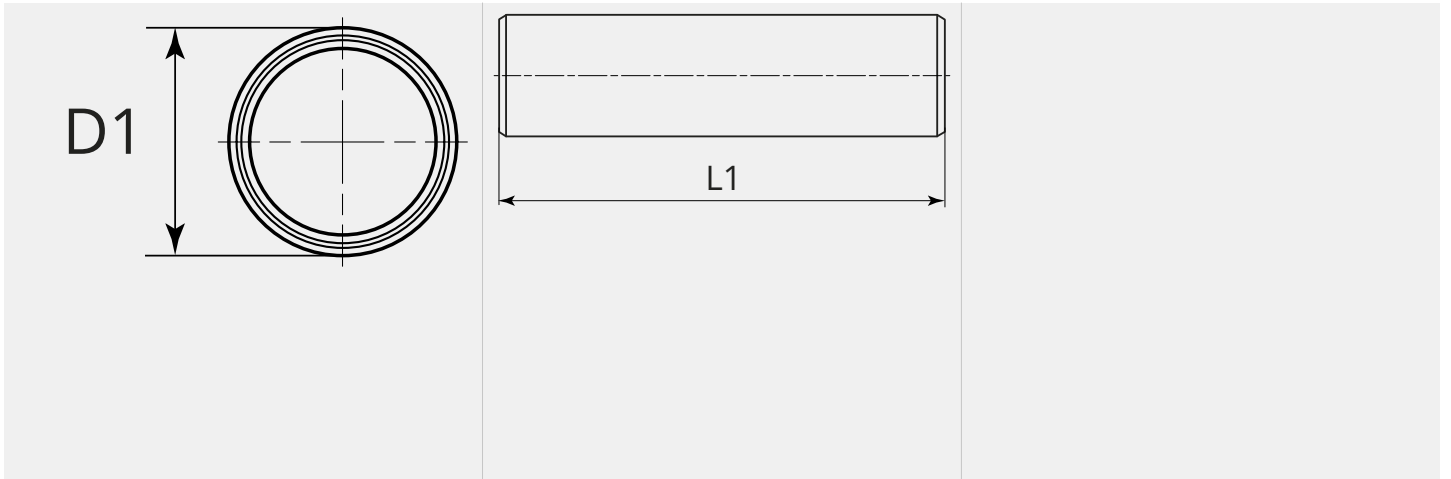


PRODUCT DESCRIPTION

Applies for series: ME1800

TECHNICAL CHARACTERISTICS

Wire (mm):	0.5 - 1.6
Welding wire:	Steel / cored wire
Material:	Steel
Surface:	Zinc plated
Suitable:	ME1800

DIMENSIONAL DRAWING**DIMENSIONAL DRAWING**

L1 (mm):	48.0
D1 (Ø):	4.9