

Feed Roll 37mm 1.6+1.6 for aluminium wire

Suitable for series: ME9300, ME2000-37, ME2500-37, ME2600-37

Item number: 119177

Packing unit: 1

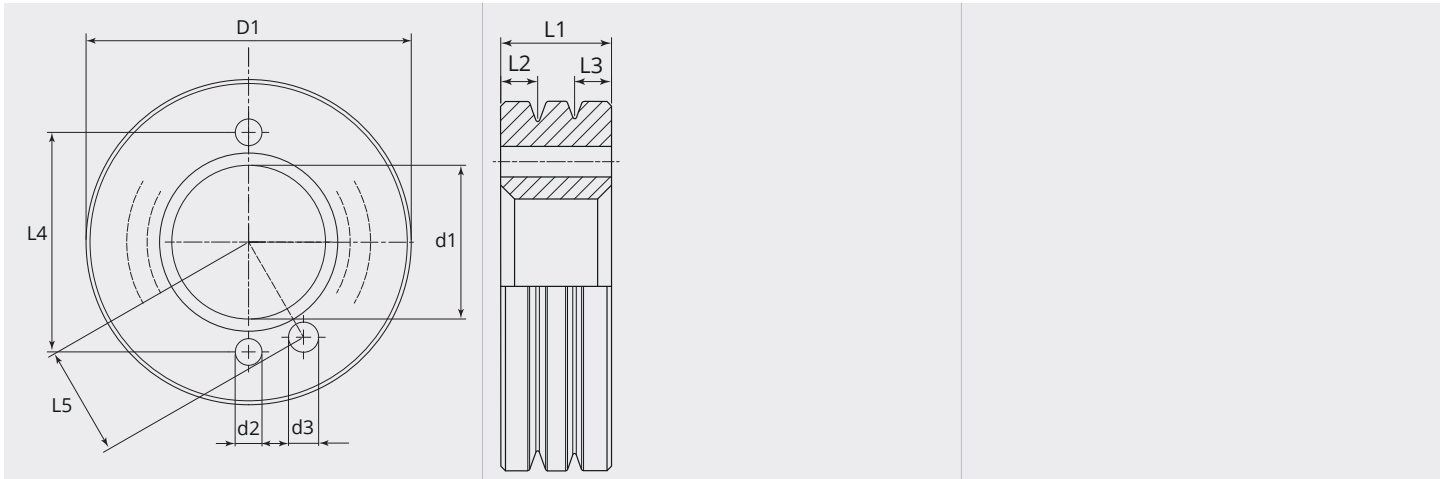


PRODUCT DESCRIPTION

Suitable for series: ME9300, ME2000-37, ME2500-37, ME2600-37

TECHNICAL CHARACTERISTICS

| | |
|--------------------------------|----------------|
| Wire (mm): | 1.6 + 1.6 |
| Welding wire: | Aluminium |
| Groove shape: | U |
| Characteristics of the groove: | flat |
| Type of setting: | standard |
| Material: | Hardened steel |
| Surface: | Black-finish |
| Arrangement Rolls: | Bottom |

DIMENSIONAL DRAWING

DIMENSIONAL DRAWING

| | |
|----------|-------|
| L1 (mm): | 12.00 |
| L2 (mm): | 4.00 |
| L3 (mm): | 4.00 |
| L4 (mm): | 27.00 |
| L5 (mm): | 13.50 |
| D1 (Ø): | 37 |
| d1 (Ø): | 18.90 |
| d2 (Ø): | 3.30 |
| d3 (Ø): | 3.70 |

From 300 pieces we produce your personal feed roll with logo. On request feed rolls are also available in stainless steel.