

# Feed Roll 30mm 0.5+0.5 for steel wire

Suitable for series: ME8700, ME8900, ME9800, ME9900

Item number:	118989
Product weight (kg):	0.048 kg
Packing unit:	1

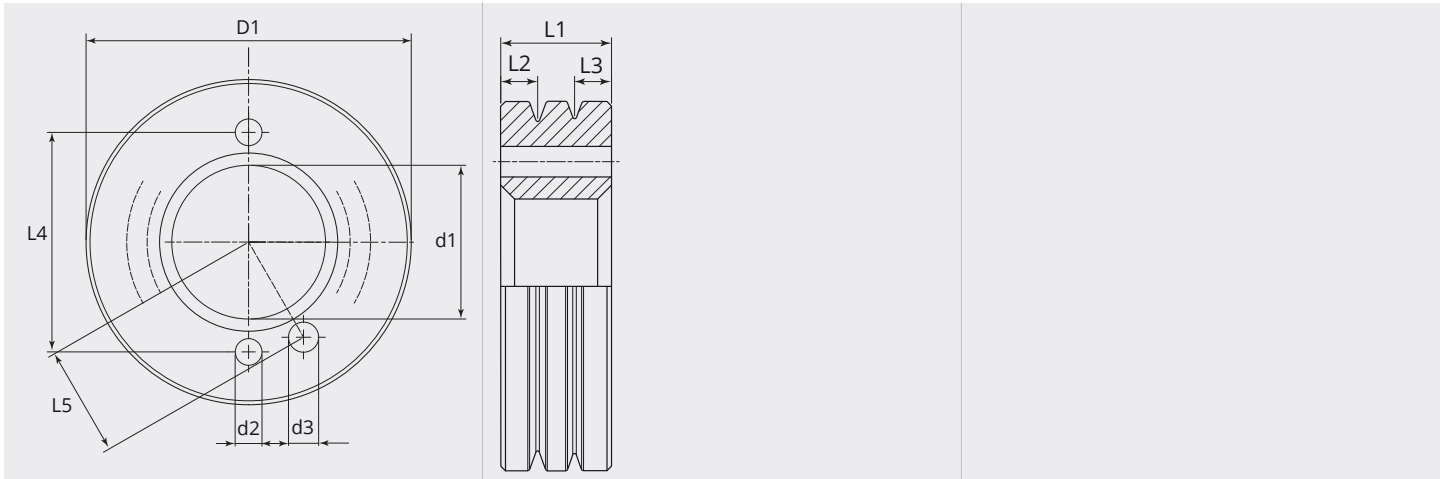


## PRODUCT DESCRIPTION

Suitable for series: ME8700, ME8900, ME9800, ME9900

## TECHNICAL CHARACTERISTICS

Wire (mm):	0.5 + 0.5
Welding wire:	Steel
Groove shape:	V
Characteristics of the groove:	flat
Type of setting:	standard
Material:	Hardened steel
Surface:	Black-finish
Arrangement Rolls:	Bottom

**DIMENSIONAL DRAWING**

**DIMENSIONAL DRAWING**

L1 (mm):	12.00
L2 (mm):	4.00
L3 (mm):	4.00
L4 (mm):	21.00
L5 (mm):	10.35
D1 (Ø):	30
d1 (Ø):	14.00
d2 (Ø):	3.30
d3 (Ø):	2.90

From 300 pieces we produce your personal feed roll with logo. On request feed rolls are also available in stainless steel.