

Intermediate Guide steel for 1.6 - 3.2mm Wire

Applies for series: ME9800

Item number:	117865
Product weight (kg):	0.002 kg
Packing unit:	1



PRODUCT DESCRIPTION

Applies for series: ME9800

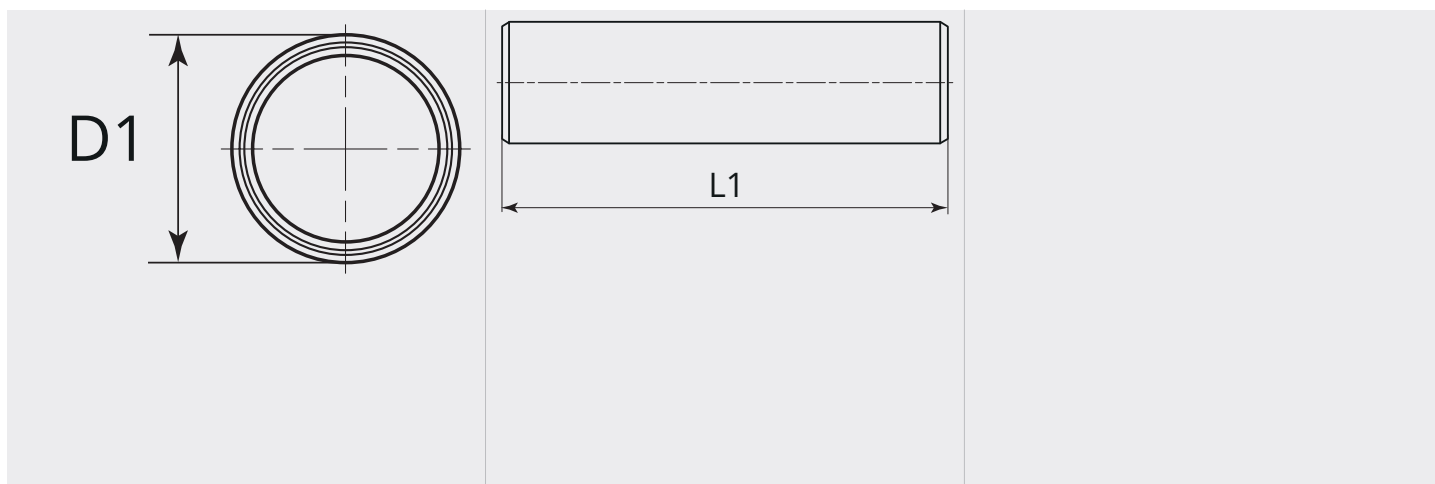
TECHNICAL CHARACTERISTICS

Wire (mm):	1.6 - 3.2
Welding wire:	Steel / cored wire
Material:	Steel
Surface:	Zinc plated
Suitable:	ME9800



MECHAFIN

DIMENSIONAL DRAWING



DIMENSIONAL DRAWING

L1 (mm):	18.0
D1 (Ø):	4.9