

Motor insulation kit

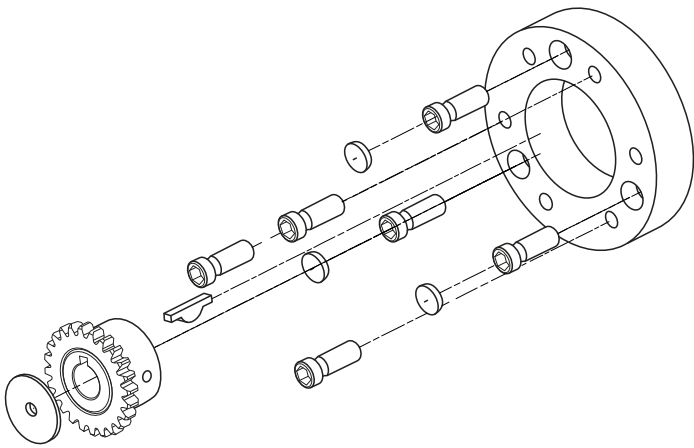
Applies for series: MEFRC2000-40

Item number:	115215
Product weight (kg):	0.135 kg
Packing unit:	1



PRODUCT DESCRIPTION

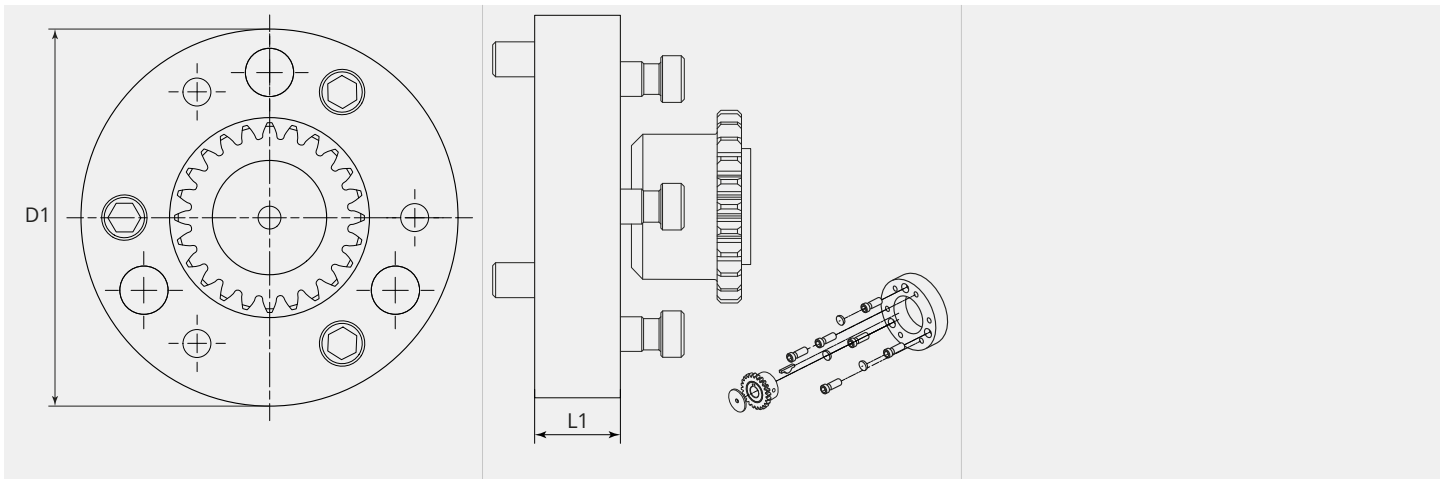
Applies for series: MEFRC2000-40



TECHNICAL CHARACTERISTICS

Motor/gear distance (mm):	17
Material:	polyoxymethylene (POM)
Suitable:	ME2000-40

DIMENSIONAL DRAWING



DIMENSIONAL DRAWING

L1 (mm):	14.8
D1 (Ø):	66