

# Feed Roll D22mm 1.4 for steel wire

In conjunction with our Push-Pull system.

Item number:	114265
Product weight (kg):	0.009 kg
Packing unit:	1



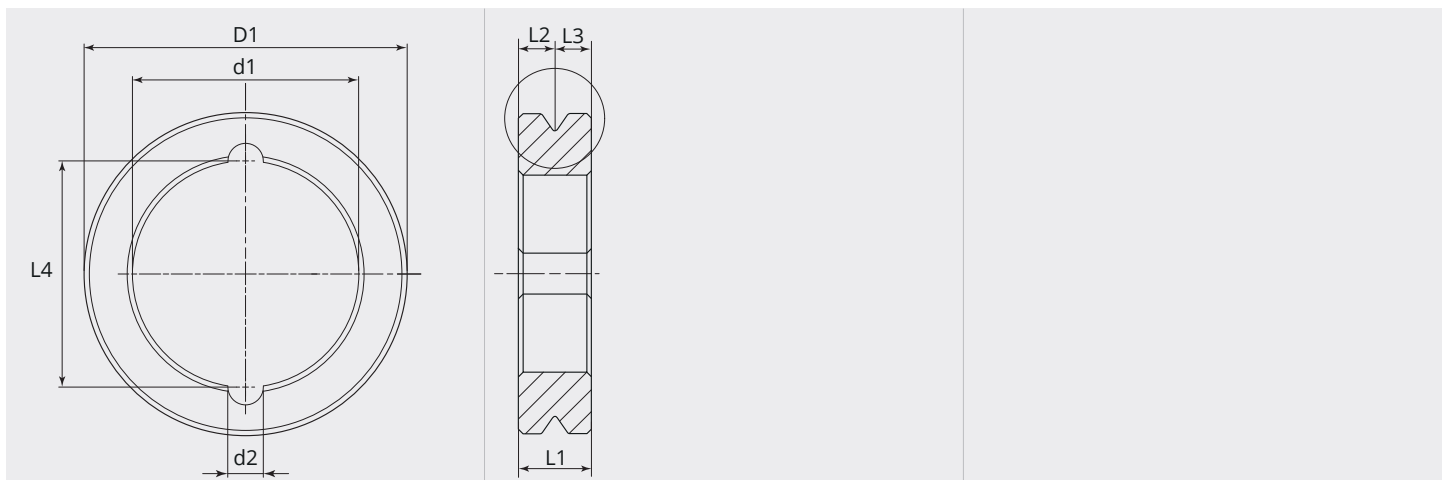
## PRODUCT DESCRIPTION

In conjunction with our Push-Pull system.

## TECHNICAL CHARACTERISTICS

Wire (mm):	1.4
Groove shape:	V
Characteristics of the groove:	flat
Welding wire:	Steel
Type of setting:	Push-Pull / MEXDRIVE
Setting:	gear adaptor
Arrangement Rolls:	Top and bottom
Material:	Hardened steel
Surface:	Black-finish
Suitable:	Push-Pull / MEXDRIVE

## DIMENSIONAL DRAWING



**DIMENSIONAL DRAWING**

L1 (mm):	5.00
L2 (mm):	2.50
L3 (mm):	2.50
L4 (mm):	13.50
D1 (Ø):	22
d1 (Ø):	13.56
d2 (Ø):	2.80

From 300 pieces we produce your personal feed roll with logo. On request feed rolls are also available in stainless steel.