

Inlet guide tube ID1.5x95

For welding wire 0.8 - 1.2mm

Item number: 100670



PRODUCT DESCRIPTION

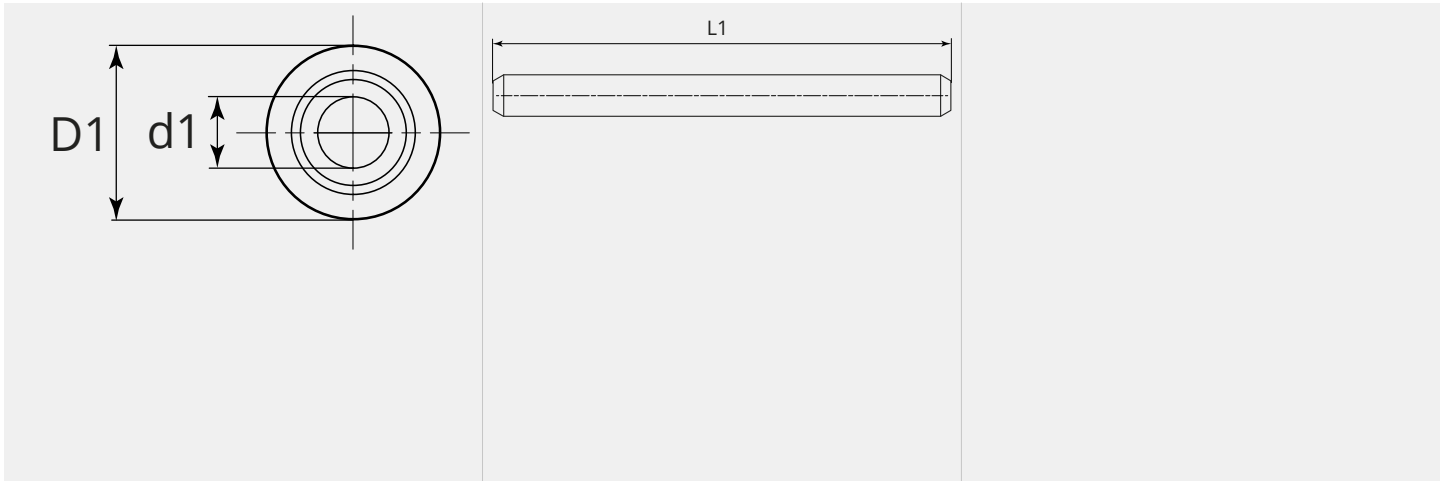
For welding wire 0.8 - 1.2mm

TECHNICAL CHARACTERISTICS

Wire (mm):	0.8 - 1.2
Welding wire:	Steel / cored wire
Material:	Steel
Surface:	Zinc plated
Length (mm):	95



DIMENSIONAL DRAWING



DIMENSIONAL DRAWING

D1 (Ø):	4.9
L1 (mm):	95.0